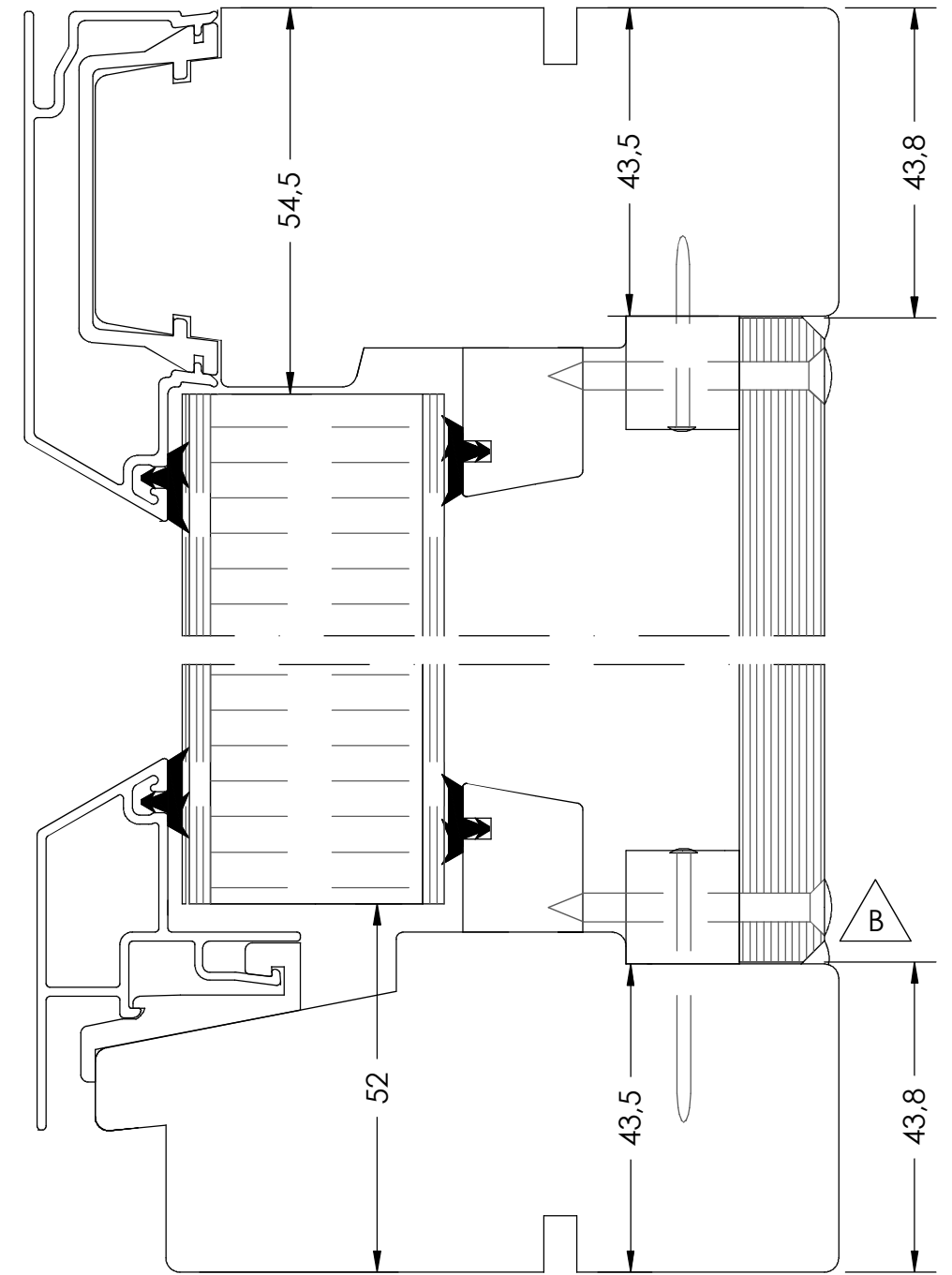
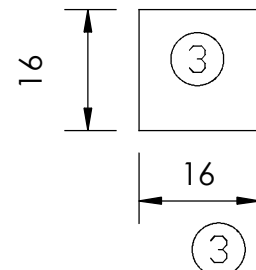
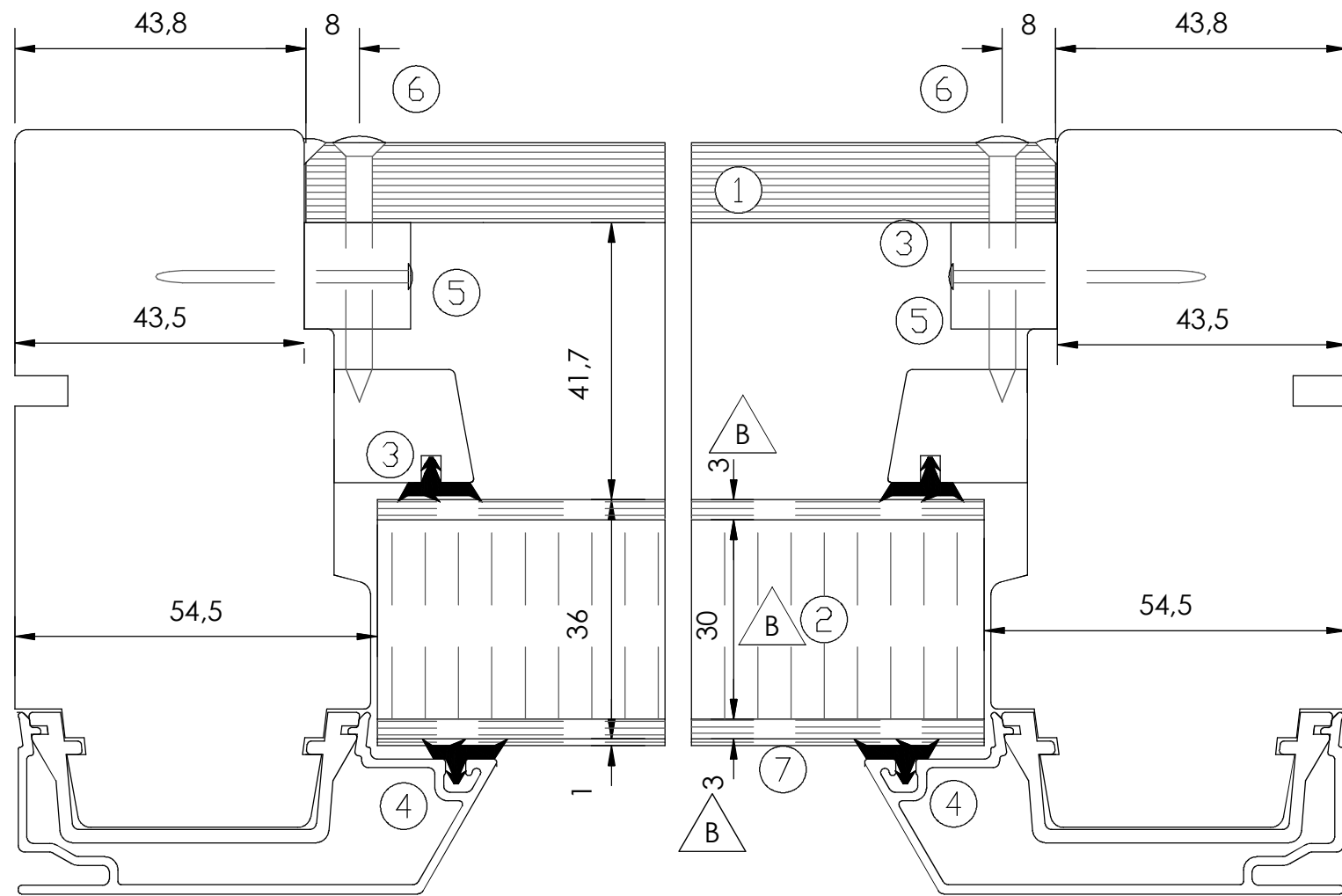


The copyright of this document and all enclosures entrusted to the consignee personally, it remains forever with InWido AB (556633-3828). To copy or otherwise reproduce this document, or to communicate to third party without our written permission is strictly forbidden.



1. INV.12 mm BJÖRKPLYWOOD för täckmålning,  
för obeh.& lasyr används 10mm FURUPLYWOOD. △ B
2. Fyllning av 3mm BOARD + 30mm ISOLERING + 3mm BOARD. △ B
3. DISTANSLIST. △ B
4. Spårmonterad E-BAND O-6524
5. SPIK KARTO SNO 38\*19 VRDK
6. SKRUV spax vvs R-TKFX 3.5x40mm
7. ALUMINIUMPLÅT 1 mm

Item	Pcs	Description	Drawing number	Article number
Revision notification			Revised by	Revised date
AM40-20120412SS			Stellan Svensson	2012-04-12
Revision description				
30 var 28. Text "Plyw... skruvas 300±10mm & 50 från hörn." utgår. Fas inritad. Board var 3,2.				
Description			Created by	Created date
Horizontalsnitt, EF-AL, Fyllning för radiatorfäste.			Peter Johansson	2006-03-23
Material		General tolerance acc. to ISO2768-1	Processing code	
Björkplywood, 12mm.		±0.2		
Included in product		Included in product family	Article number	
EF-AL				

Draw view 
Scale 1:1
Size A3
Drawing number 40-37-K210
Revision no. B