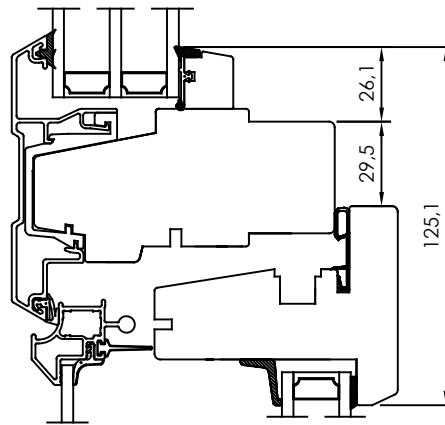
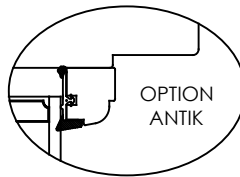
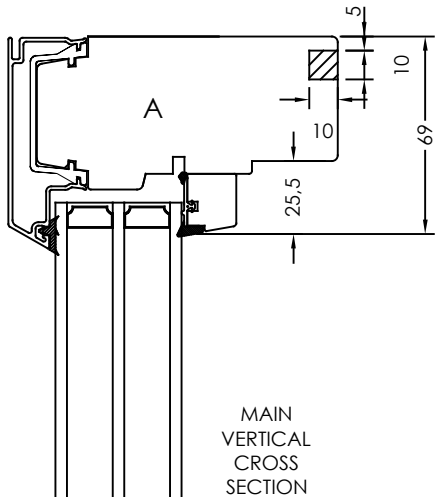


HORIZONTAL CS OPTION
- One glass in fixed frame, the other in sash with side hung fittings and kipp-dreh function.

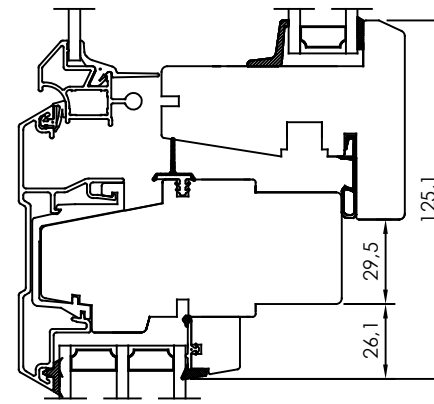
HORIZONTAL CS OPTION
- Both glass fixed in frame with middle post.

ALL AROUND OPTION

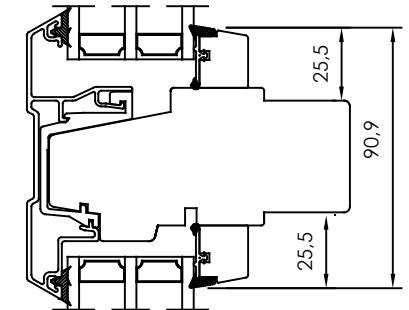
- Internal slot (not for exterior kipp-dreh).



VERTICAL CS OPTION
- Top glass in frame and bottom glass in sash with side hung fittings and kipp-dreh function.



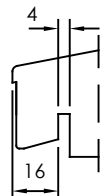
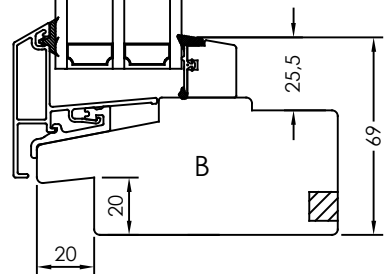
VERTICAL CS OPTION
- Top glass in sash with side hung fittings and kipp-dreh function, bottom glass in frame.



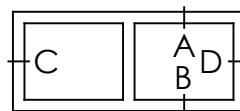
VERTICAL CS OPTION
- Both glass fixed in frame with middle post.

MAIN VERTICAL CROSS SECTION

CS = CROSS SECTION



VERTICAL CS OPTION
- Norwegian nose.



Item	No.	Description	Drawingnumber	Articlenumber
Revision notification			Revised by	Revised date
AM40-20170327TE				
Revision description				
Ytterbåge 376315 utbytt till 378892. Ny glas/dammlist ytterbåge.				
Description			Created by	Created date
Window, Fixed			SH	2019-05-15
Material		General tolerance acc. to ISO2768-1		Processing code
		ISO 2768-1 m		
Included in product		Included in product family		Article number
Inward		Fixed		



Draw view: Scale: 1:2 Size: A3 Drawing number: 40-37-W41 E (A) Revision no.